

Anti-glare- UGR<19 ($\leq 150W$, 90°)
Whole lamp-185lm/w $\eta_{TM} \geq 211lm/W@90^\circ$



IP65

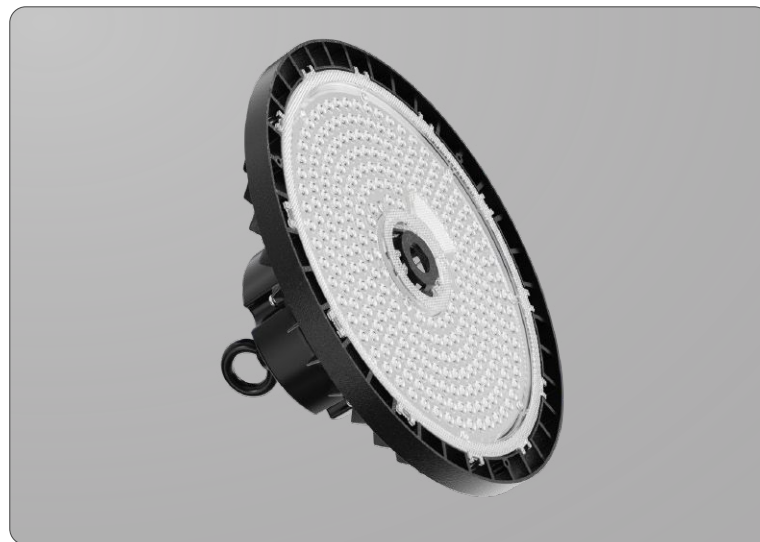
IK08

CE

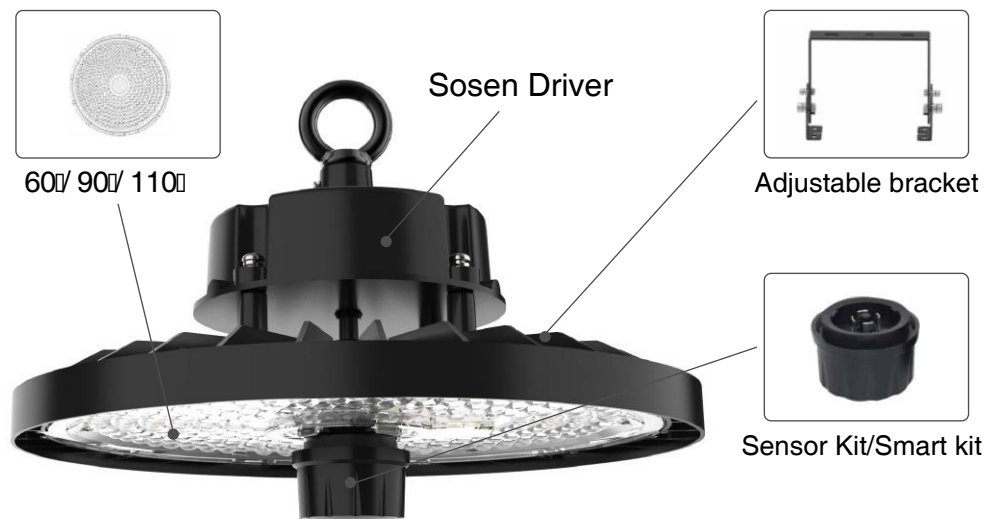
CB



| Product Details



Details

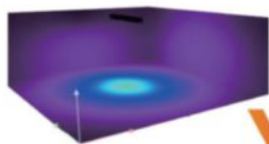
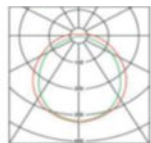


Bat Wings Light Distribution

Large light emitting angel Reasonable light distribution Low energy consumption

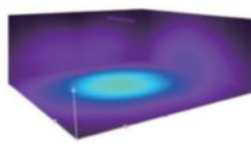
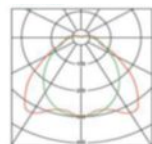
5m*5m*2m

Common



illumination (lx): 610
Power(W):125

VS



illumination (lx): 812 ↑ 33%
Power(W):100 ↓ 25%

Product advantages

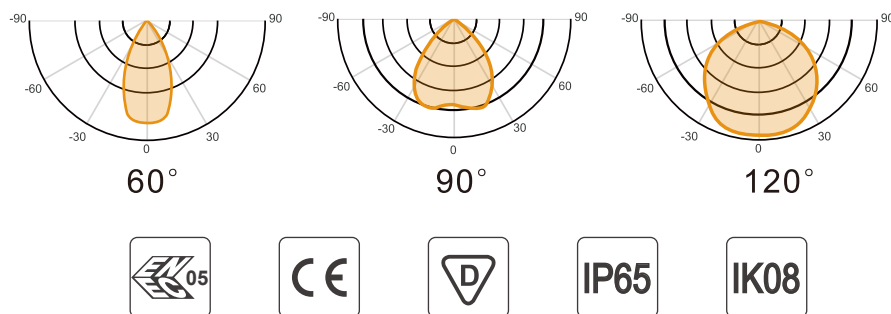
- ♦ **ERP class A**
ERP class A maximum energy savings
- ♦ **DIY FIELD-INSTALL**
60°/90°/110° optional
- ♦ **NLC WMS sensor**
NLC WMS sensor available
- ♦ **6KV surge protection**
Specially designed driver with 6KV surge protection
- ♦ **Liteon 5050 LED applications**
Professional high light Efficiency high power 5050 LED applications
- ♦ **Zhaga connector**
Available with intelligent sensor, dimming, Bluetooth, Zigbee

Details

Features

| | |
|---|--|
| Heatsink: | Die-cast aluminum |
| Optical: | Lens with > 96% useful lumen |
| Lens: | Injected PC - replaceable |
| Installation: | Hanging / surface-mount |
| Lifespan: | L80B50>100,000 hours at 35°C |
| Warranty: | 5 years |
| Ambient Ta: | -40-50°C |
| Accessory: | Sensor, control module, emergency kit, |
| Zhaga connector available with intelligent sensor, dimming, Bluetooth, Zigbee | |

Optical



Certificates

CERTIFICATE

Issued to:
Applicant: Hangzhou Holux Lighting Technology Co.,Ltd
 No.47 XiangYuan Road
 310015 Hangzhou Zhejiang, China

Licensee:
 Hangzhou Holux Lighting Technology Co.,Ltd
 No.47 XiangYuan Road
 310015 Hangzhou Zhejiang, China

Product : LED HIGH BAY
Trade name(s) : Holux
Type(s)/model(s) : HB series

The product and any acceptable variation thereto as specified in the Annex to this certificate and the documents therein referred to.

DEKRA hereby declares that the above-mentioned product has been certified on the basis of:
 - a type test according to EN IEC 60598-2-1:2021, EN IEC 60598-1:2021 and
 EN IEC 60598-1:2021/A11:2022
 - an inspection of the factory location according to CENELEC Operational Document CIG 021
 - a DEKRA certification agreement with the number 6063024

DEKRA hereby grants the right to use the ENEC certification mark.

The ENEC certification mark may be applied to the product as specified in this certificate for the duration and under the conditions of the ENEC certification agreement.

This certificate is issued on 21 November 2023 and expires upon withdrawal of one of the above mentioned standards.

Certificate number: 31-132921

DEKRA Certification B.V.

B.T.M. Holius
 Managing Director

K Xu
 Certification Manager

© Integral publication of this certificate is allowed

ACCREDITED BY THE
 DUTCH ACCREDITATION
 COUNCIL

DEKRA Certification B.V. Meander 1051, 6825 MJ Arnhem P.O. Box 5185, 6802 ED Arnhem, Netherlands
 T +31 88 96 83000 F +31 88 96 83100 www.dekra-product-safety.com Company registration 09085396

| Plug-in Emergency Module

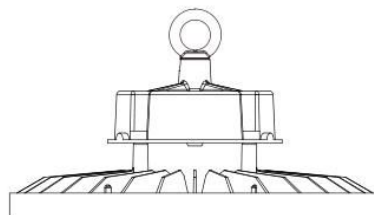
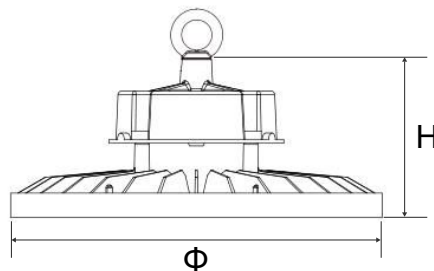
External Suspended/Surface Mounted Plug-in Emergency Module for LED Highbay



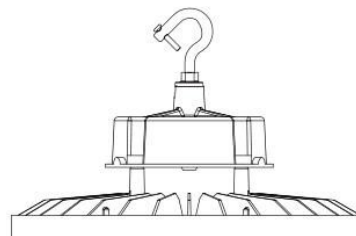
Product Information

The emergency module is designed for use with the high bay luminaires with LED supply connector. It can be suspended with a luminaire or surface mounted to provide a back-up supply in the event of a power cut. The emergency module requires a permanent live un-switched supply to maintain the battery charge. In the event of a power cut, the battery will supply the integrated LEDs at a reduced output.

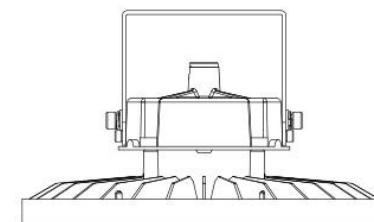
Specification



Ring mount



Hook mount



Bracket mount

| Product code | Size (mm) | Wattage | Input Voltage | UGR | Light Efficiency | Luminous Flux | CCT | CRI | Beam Angle | |
|--------------|-----------|---------|---------------|-----|------------------|---------------|------------|-----|------------|-----------------|
| HB-246-100B2 | Φ246-H115 | 100W | 220-240V | <19 | 185lm/w | 18500lm | 4000/5000K | >80 | 90° | Sensor optional |
| HB-266-150B2 | Φ266-H120 | 150W | 220-240V | <19 | 185lm/w | 27750lm | 4000/5000K | >80 | 90° | Sensor optional |
| HB-300-200B2 | Φ300-H130 | 200W | 220-240V | <22 | 185lm/w | 37000lm | 4000/5000K | >80 | 90° | Sensor optional |
| HB-246-100D2 | Φ246-H115 | 100W | 100-277V | <19 | 185lm/w | 18500lm | 4000/5000K | >80 | 90° | DALI |
| HB-266-150D2 | Φ266-H120 | 150W | 100-277V | <19 | 185lm/w | 27750lm | 4000/5000K | >80 | 90° | DALI |
| HB-300-200D2 | Φ300-H130 | 200W | 100-277V | <22 | 185lm/w | 37000lm | 4000/5000K | >80 | 90° | DALI |

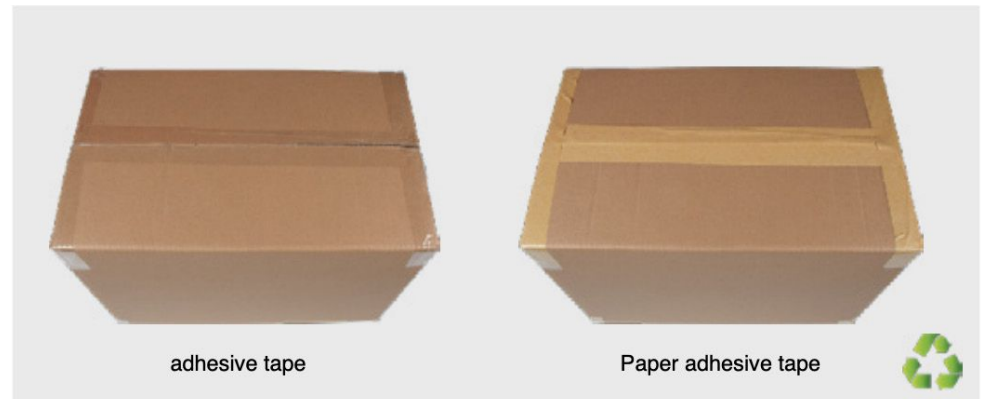
| Plastic-free packaging



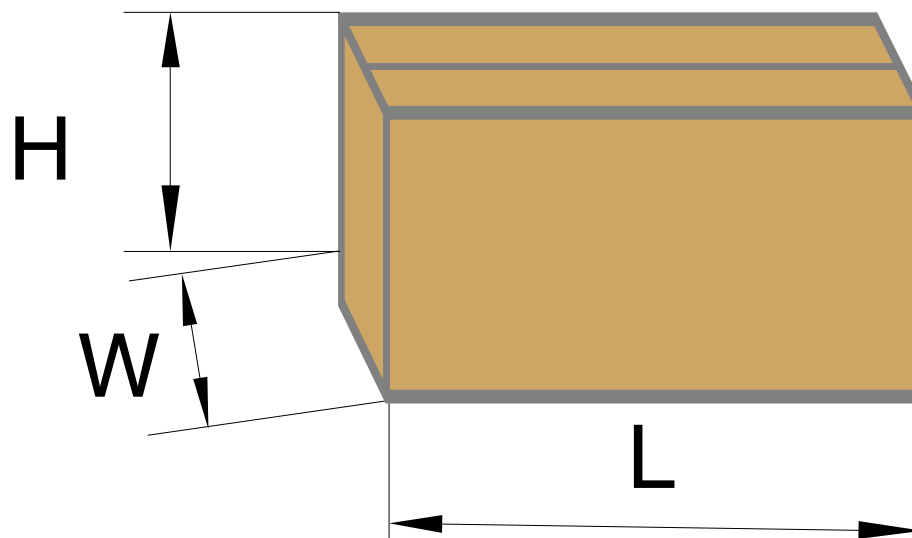
Accessory Package



Adhesive Tape for Outer Box

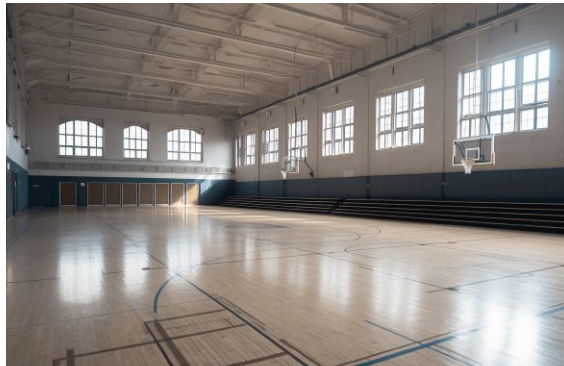
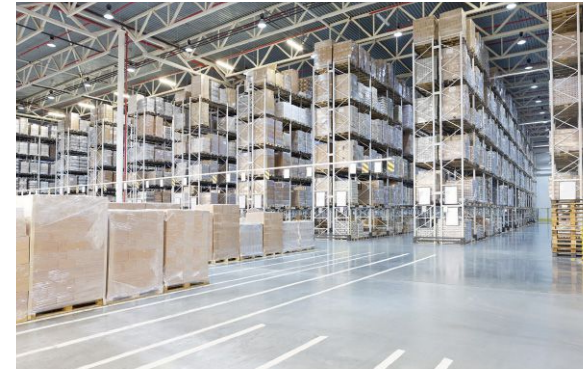
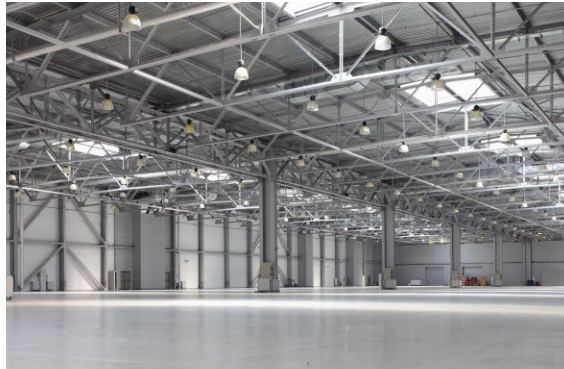


| Package



| Package Way | Model | HB-246-100 | HB-266-150 | HB-300-200 |
|------------------|---------------|-------------|-------------|-------------|
| Innerbox Package | QTY/CTN | 1 | 1 | 1 |
| | Dimension(mm) | 295*295*160 | 320*320*165 | 345*345*175 |
| | G.W(kg) | 2.3 | 2.6 | 3.6 |

Applications



Industrial plants and factories Mines
Warehouses and logistics centers
High-level operation areas
Construction sites
Ships and ports
Underground parking lots
Sports stadiums and arenas

